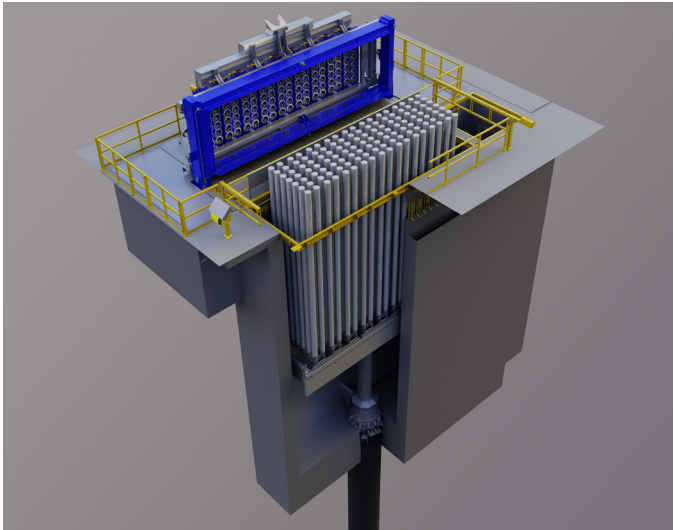


CMV

Hycast® Casthouse Technology – Casting Machine Vertical



The Hycast® CMV comprises of a vertical casting machine with a single acting internally guided hydraulic casting cylinder. The mould carriage system is supplied as a tilt frame on a fixed foundation, or a rollaway mould carriage system with or without an integrated tilt-frame

Hycast® CMV - Characteristics

- Founded on solutions proven to be successful in full-scale operation
- Mould carriage tailor-made to customer-specific requirements
- Mould carriage can be customized for extrusion ingot as well as rolling slab casting
- State of the art internally guided stroke cylinder
- Breakaway-torque limiter for cylinder guide protection
- Easy access to critical components, e.g. torque limiter
- Platen with open steel frame
- Fully automated casting sequence obtainable when the CMV is combined with Hycast® CCS

Hycast AS
Industriveien 49
NO-6600 Sunndalsøra
Norway

www.hycast.no

HYCAST®

By  Hydro